

# DURAPANEL

pvc window boards



**WATERPROOF | RECYCLABLE | EASY TO INSTALL |  
SCRATCH RESISTANT | DIMENSIONALLY STABLE**

**WINDOW BOARD FOR INTERNAL USE**

Durapanel® by Plastivan | Wantestraat 3 | B-8780 Oostrozebeke |  
T +32 (0)56 66 75 51 | F +32 (0)56 66 91 18 | E info@plastivan.com

White W

Crème CR

Marble M

Stone ST

Golden Oak GO

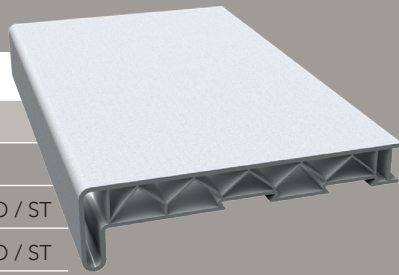
[www.plastivan.com](http://www.plastivan.com)

# DURAPANEL

pvc window boards

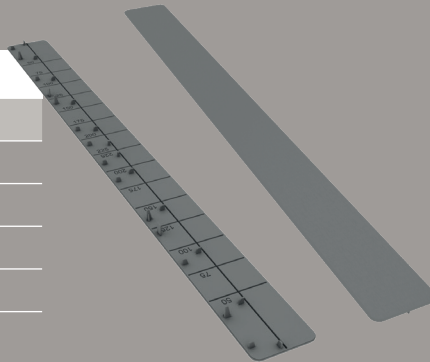
## WINDOW BOARD

Code	Description	Length	Colour
7515	15 cm	3.00m/ 6.00m	W / M
7520	20 cm	3.00m/ 6.00m	W / M / CR / GO / ST
7525	25 cm	3.00m/ 6.00m	W / M / CR / GO / ST
7530	30 cm	3.00m/ 6.00m	W / M / CR / GO / ST
7535	35 cm	3.00m/ 6.00m	W / M
7540	40 cm	3.00m/ 6.00m	W / M / GO



## UNIVERSAL END CAP

Code	Length	Colour
75 ECW	450 mm	White
75 SECCR	450 mm	Crème
75 ECGO	450 mm	Golden oak
75 ECST	450 mm	Stone



## INSTALLATION INSTRUCTIONS



Depending on the surface and the circumstances you can choose from the following :

- fixing in mortar (photo 1)
- fixing with adhesive (photo 2)
- screwing onto radiator-saddles (photo 3)

The dovetails in the lower side of the board guarantee a good grip in the mortar. When the board is installed over a radiator, we advise to leave a gap of 10 cm between this radiator and the bottom side of the board.

Distributor